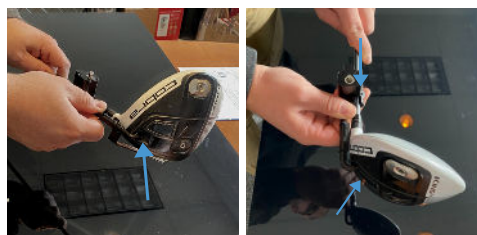


## GOLF CLUB SCORPION INSTALLATION VIDEO



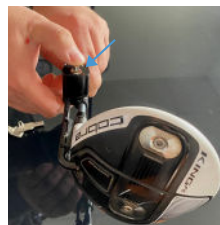
1. To install the Scorpion, start by unlocking the Scorpion. Open the Golf Club Scorpion and wrap it around the shaft of the golf club, ensuring the leg is fully extended.



2. Press firmly against the Golf Club Scorpion, pushing to the top of the ferrule.



3. Ensure that the leg is tightened down, and engage the lock. Finally, attach the "Do Not Hit" club tag by clipping it on the leg of the Scorpion and pressing it to face the head of the club.



## REMOVE GOLF CLUB SCORPION

1. To remove, insert key and turn counter clockwise.

