

SCORPION SELECT CONVERTIBLE INSTALLATION VIDEO

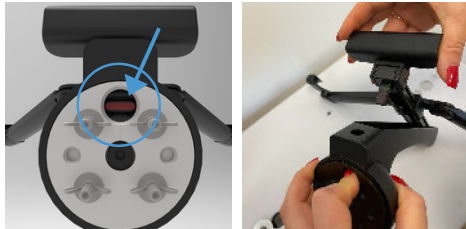


Base

Scorpion



1. Align the circle opening at the bottom of the base of the Scorpion with the press button. Press the button to release the top.



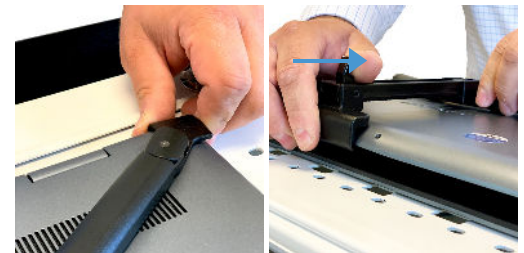
2. Remove wingnuts. Align the studs with the holes in the fixture. Tighten the wingnuts on all sides.



3. Next, take the laptop and flip it over, face down. Ensure that the legs of the Scorpion are fully extended using the press buttons.



4. Take the two corner legs and press them into the crease of the laptop, so they are nice and snug against the device. Tighten the legs.



5. To install into the base, insert the top notch first.



6. Press down in the middle to ensure the laptop is secure.

