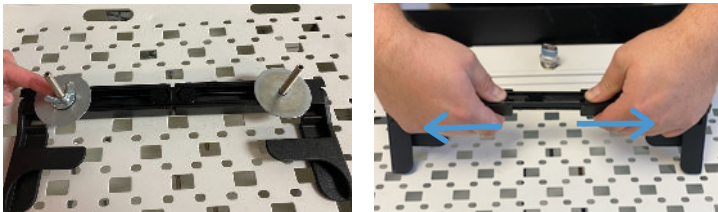


Tel: 855-757-2776  
scorionsp.com  
support@scorionsp.com  
June 2022

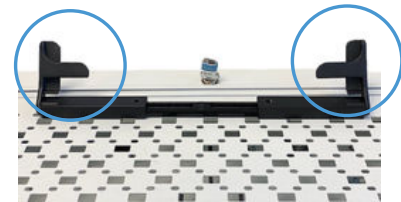
### SCORPION SELECT UNIVERSAL LAPTOP INSTALLATION VIDEO



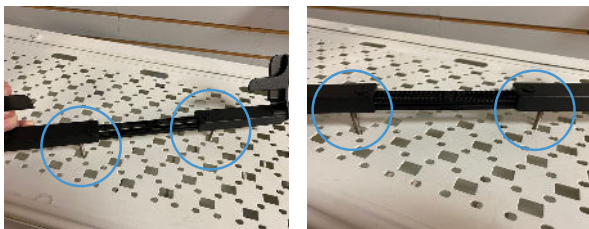
1. To mount Scorpion to fixture, remove wingnuts and washers. Fully extend the legs by using the press buttons.



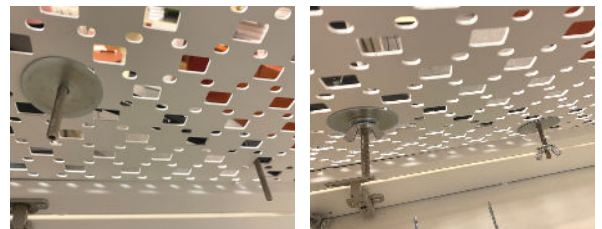
2. Make sure legs are facing forward before mounting to the fixture.



3. Align the studs with the fixture holes and insert the Scorpion into the fixture.



4. Use under counter washers and wingnuts to secure to the fixture.



5. Center the laptop between legs. Align the bottom edge of the left side of the laptop with the crease in the leg.



6. Once the left leg is flush to the Scorpion, press in on both legs to fully secure the device.

